

# SAVE AND PROTECT TAP WATER

Use drinking water sparingly and do not pollute it unnecessarily.



**SHOWER**  
**70-80L**



**BATHTUB**  
**150-200L**



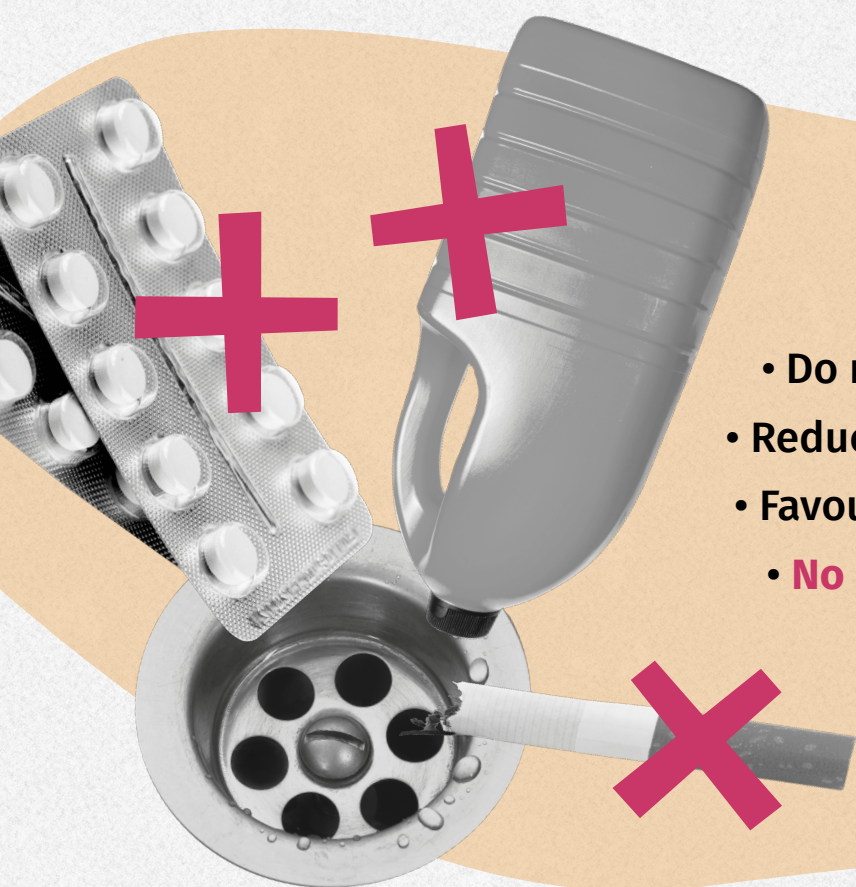
## STOP WASTE

- **Don't** leave the tap **running**.
- Choose a **shower** over a bath.
- **Repair** damaged taps, leaking joints and water pipes.



## USE RAINWATER

- **To water** plants.
- **To clean** the driveway or terrace.
- **To clean** bikes, shoes or garden tools.
- **BONUS:** With an additional installation, you can use rainwater for the **toilet and washing machine**.



## LEAVE IT CLEAN

- Do not throw **toxic products** down the drain.
- Reduce your use of **soap and cleaning products**.
- Favour **ecological** and **biodegradable products**.
- **No pesticides** in the house or in the garden.

**Drénk**  **waasser**  
ERFRËSCHEND NOHALTEG

[www.drenkwaasser.lu](http://www.drenkwaasser.lu)